



YOUR FUTURE AWAITS

2017 MASTER'S ACCELERATOR PROGRAMS



DISCOVER WHAT
YOU'RE MADE OF.
JOIN OUR COMMUNITY
OF EXCELLENCE AND
PREPARE TO MAKE A
DIFFERENCE IN YOUR
LIFE AND THE WORLD.
YOUR JOURNEY
STARTS HERE.

ABOUT THE MASTER'S ACCELERATOR PROGRAMS.....	6	HOUSING.....	36
BUSINESS	14	WAYS TO ENTER	39
EDUCATION	16	TUITION AND FEES	40
SOCIAL WORK	22	DATES.....	42
ARTS AND SCIENCES.....	24	APPLICATION	45
PSYCHOLOGICAL STUDIES	28	COUNTRY ENTRY REQUIREMENTS.....	50
NURSING AND PUBLIC HEALTH	32	TERMS AND CONDITIONS	54



STATE-OF-THE-ART
INSTRUCTION



ON-SITE
REAL-LIFE
EXPERIENCE
IN THE FINANCIAL WORLD



ONLY 40
MINUTES FROM
NEW YORK CITY
THE FINANCIAL CAPITAL OF THE WORLD

10:1

GRADUATE STUDENT-
TO-FACULTY RATIO

#20 ON UNIVERSITY PRIMETIME'S
LIST OF AMERICA'S SAFEST COLLEGES

2,404
GRADUATE STUDENTS



BEST COLLEGES
FOR EXCELLENCE IN EDUCATIONAL
QUALITY, AFFORDABILITY AND ALUMNI
EARNINGS BY MONEY MAGAZINE

FORBES 2016
LIST OF AMERICA'S
TOP VALUE
COLLEGES

MORE
THAN 80
STUDENT CLUBS & ORGANIZATIONS

RECOGNIZED BY THE
COLLEGES OF
DISTINCTION

23
DIVISION II
SPORTS TEAMS



20

MINUTES TO
JFK INTERNATIONAL
AIRPORT

20

MINUTES TO
JONES BEACH



ADELPHI: THE ENGAGED UNIVERSITY

For 120 years, Adelphi University has been engaged in local and global communities. More important, Adelphi is engaged in the lives of our students. As soon as you walk onto campus, you will notice Adelphi's commitment to providing the individual attention that you need to succeed. From your first day here through Commencement, when you join our alumni network of 90,000-strong and growing, Adelphi will be an active partner in your success.

With more than 50 academic areas of study and hundreds of on-campus resources, we have a well-established reputation for academic excellence. You can bolster the impact of your Adelphi education further by taking advantage of all that our neighbor, New York City, can offer you—so you're even more connected to the world socially, academically and professionally.



EARN YOUR DEGREE AT ADELPHI

Adelphi is a place of opportunity, where students gain the skills, knowledge and exposure to thrive as professionals and active citizens in an interconnected and fast-paced global society. Here, students are making their mark across academic fields and international borders.

Our graduate students are engaged in their work, supported in their endeavors and prepared for a competitive job market once they leave us. They have been recruited to premier global companies, such as Google, IBM and PwC, to pursue rewarding careers; and they make a difference at the National Urban League, Winthrop–University Hospital and the American Red Cross.



TWO CITIES, INFINITE OPPORTUNITIES

There’s something magical about a sprawling, 30-hectare campus on the edge of the greatest city on Earth. This is our Garden City—set apart by natural beauty, alive with academic life and surrounded by all the resources and support of a great university. At our doorstep lie the unparalleled opportunities and excitement of New York City. You get the best of both worlds: a true university experience just minutes from the cultural and financial capital of the world.

SMALL, SAFE, BEAUTIFUL

Adelphi’s home in Garden City combines the excitement and convenience of an urban center with the charm and safety of a small residential community. The university’s campus is only a short walk from the train and a fast, 45-minute ride to New York City’s Penn Station. In addition to its proximity to the Long Island Rail Road, the campus is convenient to the airports and major highways that make commuting and exploring the surrounding area easy. Our Panther Express shuttle bus service provides transportation to local train stations, bus stations and popular shopping destinations in and around Garden City. You’ll find everything from Long Island’s famous parks and beaches to sports venues, shopping, dining, recreation and cultural events—all within a short distance. Learn more at visit.adelphi.edu.



WHAT DO YOU FEEL LIKE DOING TODAY?

At your disposal: all the social resources of a traditional college campus combined with all the mind-expanding opportunities of a true metropolitan university. Write for *The Delphian*. Volunteer with and support communities both on campus and off. Take the lead in the graduate student government. Explore the art and shops of Garden City or cross the river and spend an afternoon with friends in Central Park.

The full Adelphi experience is entirely what you make of it. Here are just a few of the student organizations and clubs you might join:

- Black Students United
- Chinese Students and Scholars Association
- Circle K International
- Females of Culture United for Success (FOCUS)
- Gender and Sexuality Alliance
- International Student Society (ISS)
- Latin Student Association (LSA)
- Math and Computer Science Club
- Muslim Student Association
- Physics Club
- Sikhs United (Sikh Club)
- South Asian Student Association (SASA)
- Student Appreciation & Recognition of Adelphi Pinoys



NEW YORK CITY: THE CLASSROOM THAT NEVER SLEEPS

New York City is Garden City’s neighbor and also one of the most vibrant cities on Earth. What this means for you as an Adelphi graduate student is that you’re able to take advantage of the cultural and professional opportunities that are right at your doorstep.

Enjoy a Broadway show, stroll beautiful historic neighborhoods, eat food from anywhere in the world and explore the art world through the city’s renowned museums and galleries. Beyond this, lay the groundwork for your professional career. As an Adelphi student, you can pursue internships and job opportunities with leading global organizations located a quick commuting distance away.

NYC is home to many prominent global corporations, including:

- | | |
|-----------------|-----------------------------|
| AIG | Pfizer Inc. |
| Goldman Sachs | Philip Morris International |
| JetBlue Airways | Time Warner |
| JP Morgan Chase | Verizon |
| PepsiCo | |

A MASTER'S PROGRAM TAILORED TO YOU

THE MASTER'S ACCELERATOR PROGRAM

For international students, the move from a university in your home country to a postgraduate program in the United States can be challenging — a new language, new ways of learning and a new home. The Master's Accelerator Program (MAP) eases this transition by combining credit-bearing courses with additional academic support, instruction and cultural experiences. Together, these facets of the program combine to create a learning-centered environment that promotes academic success, active involvement in campus life and community engagement.

MAP comprises three distinct programs:

- **INTEGRATED MASTER'S ACCELERATOR PROGRAM (IMAP) — 1 SEMESTER**
- **MASTER'S ACCELERATOR PROGRAM 1 (MAP 1) — 1 SEMESTER**
- **MASTER'S ACCELERATOR PROGRAM 2 (MAP 2) — 2 SEMESTERS**

The program that's right for you will depend on your academic background, level of English-language proficiency and personal preferences; however, all MAP programs offer the following:

FLEXIBILITY

Depending on your qualifications, you can join one of three MAP options. Don't meet the English-language requirements? No problem — we also offer pre-session English.

DEDICATED SUPPORT SERVICES TEAM

Students will receive support on all issues, academic and personal, as well as help with practicalities such as airport pickup, opening a bank account and mobile phone registration. Your support team will include:

- Student services adviser
- Career advisers
- Academic advisers
- Tutors

SMALL CLASS SIZES

You're given greater individual attention and tailored support with our small class sizes and curated curriculum. You will take some classes with American students, while others are for MAP students exclusively.

PROFESSIONAL PREPARATION

Prepare for academic and professional success with MAP's professional development courses tailored to the unique needs and objectives of international students.

STREAMLINED ADMISSIONS PROCESS

Adelphi offers a simple, fast admissions process for MAP applicants. No references, résumés, essays, work experience or GRE/GMAT scores are required.





ACHIEVE MORE THAN ACADEMIC SUCCESS

INTEGRATED MASTER'S ACCELERATOR PROGRAM

The Integrated Master's Accelerator Program (IMAP) is a one-semester program designed specifically for international students with an advanced level of English-language proficiency but who also want the academic, cultural and professional support to thrive in their graduate program at Adelphi. You will earn a semester's worth of credits in your graduate degree, as well as benefiting from additional professional and research courses tailored to your needs as an international student.

- **FOR THE HIGH-ACHIEVING INTERNATIONAL STUDENT**, IMAP is designed to give students the opportunity to enter directly into their degree program of choice while still benefiting from the additional support offered by MAP, at no additional cost.
- **HAVE PRIORITY ACCESS** to a selection of academically rigorous courses hand-picked by your academic adviser to match your unique interests and career goals.
- **PREPARE FOR YOUR SUCCESS** with coaches and mentors who help ensure that you get the most out of your education and experience in the United States.
- **EXPAND YOUR NETWORK** through career preparation and programming that deepens your connection to the university, your fellow students and potential employers.
- **EMPOWER YOURSELF** by taking all your courses fully integrated with domestic graduate students.

IMAP FOR M.B.A. SAMPLE CURRICULUM

	SEMESTER 1
PROFESSIONAL SUPPORT	Professional Development Sequence
	Degree and Career Progression Seminar
RESEARCH AND ANALYSIS	The Active Research Colloquium
	Tools of the Trade: Technology Standards and Trends
DEGREE COURSES	Graduate Course I: Management of Technology
	Graduate Course II: Corporate Finance
	Graduate Course III: Negotiations for the Business Professional
	9 CREDITS TOWARD YOUR DEGREE



SUPPORT THAT EMPOWERS

MASTER'S ACCELERATOR PROGRAM 1

The Master's Accelerator Program 1 (MAP 1) is a one-semester, pre-master's program designed specifically for international students who are ready to succeed in immersive English-speaking classrooms but who also want the benefit of English-language and academic training that will help them succeed in their postgraduate program. The program curriculum offers a balance of degree-specific and MAP-exclusive courses. You will be equipped with the practical, degree-specific vocabulary and research skills that you need to excel in your coursework. MAP 1 students will be enrolled as full-time students within the Master's Accelerator Program and will earn 6 credits that will transfer into their selected degree program.

- **JUST THE RIGHT AMOUNT OF SUPPORT** when you need it. The MAP 1 curriculum is designed to accommodate your academic and English-language needs.
- **PROFESSIONAL DEVELOPMENT TAILORED TO YOUR GOALS** with special learning objectives and English-language skills that develop your skills to the graduate and professional level.
- **CREDIT-BEARING**, so you can earn credits toward your master's degree while taking courses tailored to your needs as an international student, helping you achieve your academic and career goals.
- **OPEN AND CLOSED COURSES**, so you'll take some integrated classes with U.S. students and others with just your designated MAP cohort.

MAP 1 FOR M.B.A. SAMPLE CURRICULUM	SEMESTER 1
PROFESSIONAL SUPPORT	Professional Development Sequence
	Degree and Career Progression Seminar
RESEARCH AND ANALYSIS	The Active Research Colloquium
	Tools of the Trade: Technology Standards and Trends
CONTEXTUAL ENGLISH	Making the Case: Structure, Argument and Composition
	The Art of Presenting: Advanced Oral Communications
DEGREE COURSES	Graduate Course I: Leadership and Innovation in Complex Systems (closed course)
	Graduate Course II: Corporate Finance
	6 CREDITS TOWARD YOUR DEGREE

Note: A closed course is a course that is taken exclusively with other students in MAP.





YOUR PATH TO SUCCESS

MASTER'S ACCELERATOR PROGRAM 2

The Master's Accelerator Program 2 (MAP 2) is a two-semester program exclusively offered to aspirational international students. MAP 2 students benefit from wraparound support and language for discipline-specific purposes. Your curriculum will include advanced writing, public speaking and research instruction; each course is designed to help ensure your success at Adelphi. The small class sizes, hands-on and interactive programs and unique curriculum are designed to help you progress seamlessly into your master's degree program. MAP 2 students will be enrolled as full-time students within MAP and will earn 9 credits that will transfer into their selected degree program.

- **AN IMMERSIVE EDUCATIONAL EXPERIENCE** with a credit-bearing curriculum that bridges language, culture and academics.
- **BOLSTER YOUR ACADEMIC ACHIEVEMENT** with targeted English-language instruction, tutoring, academic advising and student support.
- **BENEFIT FROM PERSONALIZED ENGLISH-LANGUAGE INSTRUCTION** that's fully contextual and designed to ensure your academic, social and professional success.

MAP 2 FOR M.B.A. SAMPLE CURRICULUM

	SEMESTER 1	SEMESTER 2
PROFESSIONAL SUPPORT	Professional Development Sequence I	Professional Development Sequence II
	Academic Conferences, Panels and Seminars	Degree and Career Progression Seminar
RESEARCH AND ANALYSIS	The Active Research Colloquium I	The Active Research Colloquium II
	Data Management: Gathering, Analyzing and Interpreting Data	Tools of the Trade: Technology Standards and Trends
CONTEXTUAL ENGLISH	English for Professional Purposes	Making the Case: Structure, Argument, and Composition
	English for Specific Purposes	The Art of Presenting: Advanced Oral Communications
DEGREE COURSES	Graduate Course I: Leadership and Innovation in Complex Systems (closed course)	Graduate Course II: Building Shareholder Value
	--	Graduate Course III: Negotiations for the Business Professional
	3 CREDITS TOWARD YOUR DEGREE	6 CREDITS TOWARD YOUR DEGREE

Note: A closed course is a course that is taken exclusively with other students in MAP.

PREPARING THE NEXT GENERATION OF EDUCATIONAL LEADERS

RUTH S. AMMON SCHOOL OF EDUCATION

At the Ruth S. Ammon School of Education, learning takes priority. After all, what you learn today will help you inspire the students you'll teach for generations to come. As a scholarly community, Adelphi's School of Education is committed to providing educational opportunities for professional growth at the master's level by creating authentic academic and field experiences, cultivating respect for the diverse population that we serve, embracing ethical practices and preparing our students to become reflective change agents through research, collaboration and leadership.

Whether you're interested in educational technology or physical education, your degree prepares you – and your future students – for success. Small class sizes provide personal attention from professors and the chance to work closely with your fellow students. Specialized training centers and internships at local school districts and health care institutions provide valuable practical experience.

Adelphi offers MAP for a number of graduate degrees in education. Upon completion of their MAP semester(s), students will progress into the School of Education to complete the remaining credits required to earn their degree.

EDUCATION DEGREES OFFERED THROUGH MAP		
Childhood Special Education Studies (M.S.)	Educational Theatre (M.A.)	Sport Management (M.S.)
Community Health Promotion (M.A.)	Exercise Science (M.S.)	Teaching English to Speakers of Other Languages (M.A.)*
Educational Technology (M.A.)	Physical Education (M.A.)	

* IMAP only

ACCREDITED BY THE
NATIONAL COUNCIL FOR THE
ACCREDITATION OF TEACHER
EDUCATION (NCATE)

ALL PROGRAMS ARE APPROVED
AND REGISTERED WITH NEW
YORK STATE EDUCATION
DEPARTMENT (NYSED)

EMPLOYMENT RATE
FOR NEW TEACHERS FROM
ADELPHI UNIVERSITY IS
HIGHER THAN THE
STATEWIDE AVERAGE

SPECIALIZED INTERNSHIPS AT
LOCAL SCHOOL DISTRICTS AND
HEALTH CARE INSTITUTIONS

A PASSION FOR KNOWLEDGE

We know that there are many ways to foster learning. At Adelphi's school of education, you'll gain invaluable hands-on experience, both on campus and at internship placements in local school districts. Campus centers and institutions include the Early Learning Center, the Adult Fitness Program and the Hy Weinberg Center for Communication Disorders. Graduate assistantships are also available for master's students.

Off-campus, Adelphi offers a range of opportunities as well, including placements in more than 20 school districts throughout the metropolitan area. All field experiences are carefully supervised to make sure that candidates develop and demonstrate the knowledge, skills and dispositions necessary to help all students learn. Awareness should lead to action, as teachers embrace their roles as student advocates and active community members.

SMALL CLASS SIZES WITH PERSONAL ATTENTION FROM DISTINGUISHED FACULTY

ALUMNI AND STUDENT SPOTLIGHT

RANEEM A. ASSERI
GRADUATE STUDENT

Coming from Saudi Arabia, Asseri was nervous at first but found everyone at Adelphi very understanding of international students. So far, she's loved the experience of teaching special-needs students and getting helpful feedback from supervisors.

JANICE BRUCE
PRINCIPAL, JUNIOR HIGH SCHOOL
291 ROLAND HAYES

After emigrating from Trinidad, Bruce worked as both a businesswoman and an English and science teacher in Brooklyn. Now that she has her M.A. from the Ruth S. Ammon School of Education, she combines the puzzle solving of business and the passion of education as the head administrator of this school for grades 6, 7 and 8 and special needs students.



CHILDHOOD SPECIAL EDUCATION STUDIES (M.S.)

ACCEPTANCE CRITERIA

PROGRAM	GPA	IELTS	QUALIFYING UNDERGRADUATE DEGREES	AVAILABLE ENTRY
IMAP	3.0	6.5	4-year undergraduate degree, or equivalent, from an accredited university in any field.	Fall, Spring
MAP 1	3.0	6.0		
MAP 2	2.5	5.5		
Pre-Sessional English	2.5	4.5		

SAMPLE MAP COURSEWORK

Exploring the Arts: Creative Speech and Storytelling

(closed course)

Digital Literacies and 21st Century

(closed course)

PROGRESSION DETAILS

	TRANSFERABLE CREDITS*	PROGRESSION REQUIREMENTS
IMAP	3 credits	Not Applicable
MAP 1	3 credits	3.25 GPA with no course grade lower than a B, and approval from the Accelerator team.
MAP 2	3 credits	

TOTAL CREDIT HOURS REQUIRED FOR DEGREE:

33

* Transferable credits for this degree are distinct because of specific degree requirements.

* Transferable credits for this degree are distinct because of specific degree requirements.

COMMUNITY HEALTH PROMOTION (M.A.)					
ACCEPTANCE CRITERIA					
	GPA	IELTS	QUALIFYING UNDERGRADUATE DEGREES	AVAILABLE ENTRY	
IMAP	3.0	6.5	4-year undergraduate degree, or equivalent, from an accredited university in any field, and 12 credits of health content courses.	Fall, Spring	
MAP 1	3.0	6.0			
MAP 2	2.5	5.5			
Pre-Sessional English	2.5	4.5			
SAMPLE MAP COURSEWORK			PROGRESSION DETAILS		
<ul style="list-style-type: none">• Management Theory/Organizational Behavior (closed course)• Research Design (closed course)				TRANSFERABLE CREDITS	PROGRESSION REQUIREMENTS
			IMAP	9 credits	Not Applicable
			MAP 1	6 credits	3.25 GPA with no course grade lower than a B, and approval from the Accelerator team.
			MAP 2	9 credits	
					TOTAL CREDIT HOURS REQUIRED FOR DEGREE: 37

EDUCATIONAL TECHNOLOGY (M.A.)					
ACCEPTANCE CRITERIA					
	GPA	IELTS	QUALIFYING UNDERGRADUATE DEGREES	AVAILABLE ENTRY	
IMAP	3.0	6.5	4-year undergraduate degree, or equivalent, from an accredited university in any field.	Fall, Spring	
MAP 1	3.0	6.0			
MAP 2	2.5	5.5			
Pre-Sessional English	2.5	4.5			
SAMPLE MAP COURSEWORK			PROGRESSION DETAILS		
<ul style="list-style-type: none">Exploring the Arts: Creative Speech and Storytelling (closed course)Digital Literacies and 21st Century (closed course)				TRANSFERABLE CREDITS	PROGRESSION REQUIREMENTS
			IMAP	9 credits	Not Applicable
			MAP 1	6 credits	3.25 GPA with no course grade lower than a B, and approval from the Accelerator team.
			MAP 2	9 credits	
					TOTAL CREDIT HOURS REQUIRED FOR DEGREE: 32
Note: A closed course is a course that is taken exclusively with other students in MAP.					

Note: A closed course is a course that is taken exclusively with other students in MAP.

EDUCATIONAL THEATRE (M.A.)					
ACCEPTANCE CRITERIA					
	GPA	IELTS	QUALIFYING UNDERGRADUATE DEGREES	AVAILABLE ENTRY	
IMAP	3.0	6.5	4-year undergraduate degree, or equivalent, from an accredited university in any field.	Fall, Spring	
MAP 1	3.0	6.0			
MAP 2	2.5	5.5			
Pre-Sessional English	2.5	4.5			
SAMPLE MAP COURSEWORK			PROGRESSION DETAILS		
<ul style="list-style-type: none">Exploring the Arts: Creative Speech and Storytelling (closed course)Digital Literacies and 21st Century (closed course)				TRANSFERABLE CREDITS*	PROGRESSION REQUIREMENTS
			IMAP	3 credits	Not Applicable
			MAP 1	3 credits	3.25 GPA with no course grade lower than a B, and approval from the Accelerator team.
			MAP 2	3 credits	
					TOTAL CREDIT HOURS REQUIRED FOR DEGREE: <div>37</div>
* Transferable credits for this degree are distinct because of specific degree requirements.					

* Transferable credits for this degree are distinct because of specific degree requirements.

EXERCISE SCIENCE (M.S.)					
ACCEPTANCE CRITERIA					
	GPA	IELTS	QUALIFYING UNDERGRADUATE DEGREES	AVAILABLE ENTRY	
IMAP	3.0	6.5	4-year undergraduate degree, or equivalent, from an accredited university in any field, and coursework in Human Anatomy and Physiology (8 credits, to include labs), Exercise Physiology (with lab) and Kinesiology.	Fall, Spring	
MAP 1	3.0	6.0			
MAP 2	2.5	5.5			
Pre-Sessional English	2.5	4.5			
SAMPLE MAP COURSEWORK			PROGRESSION DETAILS		
<ul style="list-style-type: none">Management Theory/Organizational Behavior (closed course)Environmental Studies Special Topics (closed course)				TRANSFERABLE CREDITS*	PROGRESSION REQUIREMENTS
			IMAP	3 credits	Not Applicable
			MAP 1	3 credits	3.25 GPA with no course grade lower than a B, and approval from Accelerator team.
			MAP 2	3 credits	
					TOTAL CREDIT HOURS REQUIRED FOR DEGREE: <hr/> 36
* Transferable credits for this degree are distinct because of specific degree requirements.					

* Transferable credits for this degree are distinct because of specific degree requirements.

PHYSICAL EDUCATION (M.A.)					
ACCEPTANCE CRITERIA					
	GPA	IELTS	QUALIFYING UNDERGRADUATE DEGREES	AVAILABLE ENTRY	
IMAP	3.0	6.5	4-year undergraduate degree, or equivalent, from an accredited university in any field, with coursework in: Human Anatomy and Physiology (8 credits, with labs), Exercise Psychology (with labs), and Kinesiology.	Fall, Spring	
MAP 1	3.0	6.0			
MAP 2	2.5	5.5			
Pre-Sessional English	2.5	4.5			
SAMPLE MAP COURSEWORK			PROGRESSION DETAILS		
<ul style="list-style-type: none">Management Theory/Organizational Behavior (closed course)Research Design (closed course)				TRANSFERABLE CREDITS*	PROGRESSION REQUIREMENTS
			IMAP	3 credits	Not Applicable
			MAP 1	3 credits	3.25 GPA with no course grade lower than a B, and approval from the Accelerator team.
			MAP 2	3 credits	
					TOTAL CREDIT HOURS REQUIRED FOR DEGREE: 36
* Transferable credits for this degree are distinct because of specific degree requirements.					

* Transferable credits for this degree are distinct because of specific degree requirements.

SPORT MANAGEMENT (M.S.)					
ACCEPTANCE CRITERIA					
	GPA	IELTS	QUALIFYING UNDERGRADUATE DEGREES	AVAILABLE ENTRY	
IMAP	3.25	6.5	4-year undergraduate degree, or equivalent, from an accredited university in any field.	Fall, Spring	
MAP 1	3.0	6.0			
MAP 2	2.5	5.5			
Pre-Sessional English	2.5	4.5			
SAMPLE MAP COURSEWORK			PROGRESSION DETAILS		
<ul style="list-style-type: none">Leadership & Innovation in Complex Systems (closed course)*Management of Technology (closed course)Negotiation for the Business Professional				TRANSFERABLE CREDITS	PROGRESSION REQUIREMENTS
			IMAP	9 credits	Not Applicable
			MAP 1	6 credits	3.25 GPA with no course grade lower than a B, and approval from the Accelerator team.
			MAP 2	9 credits	
					TOTAL CREDIT HOURS REQUIRED FOR DEGREE: 36

TESOL (M.A.)					
ACCEPTANCE CRITERIA					
	GPA	IELTS	QUALIFYING UNDERGRADUATE DEGREES	AVAILABLE ENTRY	
IMAP	3.25	6.5	4-year undergraduate degree, or equivalent, from an accredited university in any field.	Fall, Spring	
MAP 1	Not Available		Not Applicable		
MAP 2					
Pre-Sessional English					
SAMPLE MAP COURSEWORK			PROGRESSION DETAILS		
<ul style="list-style-type: none">TESOL courses chosen in IMAP must be at the 500, 600 and 700 level.				TRANSFERABLE CREDITS	PROGRESSION REQUIREMENTS
			IMAP	9 credits	Not Applicable
			MAP 1	Not Applicable	Not Applicable
			MAP 2		
					TOTAL CREDIT HOURS REQUIRED FOR DEGREE: 36

Note: A closed course is a course that is taken exclusively with other students in MAP.



STUDENT-CENTERED & CAREER-FOCUSED

SCHOOL OF SOCIAL WORK

Attending the highly ranked Adelphi University School of Social Work prepares you for advanced professional practice. Your respected professors are experienced practitioners, researchers and activists who will train you to be an effective clinician and client advocate. Small class sizes and a supportive environment foster a nurturing relationship among students and faculty.

The School of Social Work is ideally located for a variety of hands-on learning opportunities working with diverse communities and leading agencies. As part of your degree, you'll complete invaluable field placements, or internships, thanks to the school's partnerships with more than 1,000 diverse health, mental health and social service agencies.

Excited to help inform social policy, program and services delivery and social work practice? Then you'll definitely want to participate with faculty and other students in the school's community partnerships and programs.

Adelphi offers MAP for the Master of Social Work (M.S.W.). Upon completion of their MAP semester(s), students will progress to the School of Social Work to complete the remaining credits required to earn their M.S.W.

DEGREES OFFERED THROUGH MAP
Master of Social Work (M.S.W.)

ACCREDITED BY THE
COUNCIL ON SOCIAL
WORK EDUCATION

#38
SOCIAL WORK
GRADUATE SCHOOL

– U.S. NEWS & WORLD REPORT, 2016

90%
OF ADELPHI SCHOOL OF SOCIAL
WORK GRADUATES GAIN
EMPLOYMENT WITHIN A YEAR

19%
PREDICTED RISE IN DEMAND FOR
SOCIAL WORKERS OVER THE NEXT
9 YEARS
– BUREAU OF LABOR STATISTICS

INSPIRING THROUGH ACTION

From teaching and mentoring to community engagement and field experience, the School of Social Work provides a vast range of high-quality student opportunities aimed to ensure that every graduate of the Adelphi University School of Social Work is grounded in both theory and practical experience—and thoroughly prepared to make an impact.

Our students and alumni are making a difference at health and human service agencies throughout the New York metropolitan area. As a master's student, you will develop strong professional skills as you form the foundation of your practice and change lives—yours included.

In your first year, you'll get the knowledge, skills and ethics needed for generalist social work practice. Then, in your advanced year, you'll sharpen your clinical skills and concentrate in advanced direct practice. Optional specializations include:

- Mental health, substance abuse and trauma in context
- Health across the life course
- Children and families
- Human services management and organizational leadership

ALUMNI LEADING THE WAY

KATIE BRANAGAN
SOCIAL WORKER, INSTITUTE FOR FAMILY HEALTH
M.S.W.

Branagan got a job before she even graduated! Thanks to one of her internships, she now writes psychosocial assessments and connects clients to medical care, housing and other benefits.

RAYMOND TORRES
EXECUTIVE DIRECTOR, CASEY FAMILY SERVICES
M.S.W.

Now retired, Torres spent 20 years serving 4,500 disadvantaged children and families a year. While at Casey Family Services, he also oversaw a \$52 million budget and 360 full-time staff.

AVA FEVRIER
EXECUTIVE DIRECTOR, CASEY FAMILY SERVICES
M.S.W.

After getting her master's, Fevrier quickly found a job working with medically at-risk patients. She connects them with medical care and confidently uses her clinical skills to advocate for her patients.

MASTER OF SOCIAL WORK (M.S.W.)					
ACCEPTANCE CRITERIA					
PROGRAM	GPA	IELTS	QUALIFYING UNDERGRADUATE DEGREES	AVAILABLE ENTRY	
IMAP	3.0	6.5	4-year undergraduate degree, or equivalent, from an accredited university in any field.	Fall, Spring	
MAP 1	3.0	6.0			
MAP 2	2.5	5.5			
Pre-Sessional English	2.5	4.5			
SAMPLE MAP COURSEWORK			PROGRESSION DETAILS		
<ul style="list-style-type: none">• Social Work, Practice and the Treatment of Substance Abuse <i>(closed course)</i>• Research Design <i>(closed course)</i>				TRANSFERABLE CREDITS	PROGRESSION REQUIREMENTS
			IMAP	9 credits	Not Applicable
			MAP 1	6 credits	3.25 GPA with no course grade lower than a B, and approval from the Accelerator team.
			MAP 2	9 credits	
			TOTAL CREDIT HOURS REQUIRED FOR DEGREE:		
			64		

Note: A closed course is a course that is taken exclusively with other students in MAP.

LEARNING WITH A GLOBAL PERSPECTIVE

COLLEGE OF ARTS AND SCIENCES

For well over a century, Adelphi University has had a commitment to the value of a strong liberal arts and sciences education for all students. Given the complexities and challenges of modern life, all students, whatever their majors or professional aspirations, need an extensive array of academic skills and knowledge to assume a responsible role in society.

In the College of Arts and Sciences (CAS), students receive a liberal education that gives them the proper perspective to master their specific disciplines. The CAS is committed to the belief that all areas of learning can be advanced. Students are encouraged to learn from the great minds of the past and to shape the future with new ideas and ways of thinking. It is this continuum of learning that inspires real change in the world.

As a graduate student, you will gain a combination of expertise in your chosen discipline and a broader education about topics that compliment your main area of study. With this abundance of knowledge, you will leave Adelphi with the specialized focus and well-rounded outlook needed to succeed in a professional environment.

Adelphi offers MAP for a number of graduate degrees in the arts and sciences. Upon completion of their MAP semester(s), students will progress into the CAS to complete the remaining credits required to earn their degree.

DEGREES OFFERED THROUGH MAP
Biology (M.S.)*
Creative Writing (M.F.A.)
Environmental Studies (M.S.)

* IMAP only

OUR FACULTY RECEIVE
FUNDING FROM THE NATIONAL
INSTITUTES OF HEALTH,
THE JOINT OCEANOGRAPHIC
INSTITUTES AND OTHER
AGENCIES

OUR FACULTY ARE
DISTINGUISHED
PLAYWRIGHTS, PUBLISHED
RESEARCHERS AND
EXHIBITING ARTISTS

STUDY MOLECULAR BIOLOGY,
CELLS AND TISSUES AND
TRANSMISSION ELECTRON
MICROSCOPY IN ADELPHI'S
CUTTING-EDGE LABS

LEARNING WITH PURPOSE

You will soon have a leading career in biology, creative writing or environmental studies. Wherever your career takes you, you will need the fundamental skills taught at the CAS: Research and analysis. Communication. Critical thinking.

As active researchers and creators, your graduate professors are experts in their field and know what it takes to succeed. They will educate and inspire you in the classroom so you can do amazing things out in the world.

Students have access to a wide range of modern facilities and partnership opportunities that push beyond the classroom. That's why you are encouraged to pursue original research, to undertake collaborative work with peers and mentors, to study in a variety of internships and to take advantage of the opportunities that the University offers to meet visiting artists, scholars and world figures.

Upon successful completion of the Master's Accelerator Program, students will progress to the CAS.

RESEARCH IN
STATE-OF-THE-ART
BIOLOGY LABORATORIES



ALUMNI SPOTLIGHT

LORRAINE D. ELLIS
M.S. BIOLOGY
CEO/FOUNDER OF RESEARCH DYNAMICS

Favorite Adelphi memory: Working with her professor on her master's thesis, regarding the brain chemistry of mice

The master at work: After receiving her master's in biology, Ellis spent years working at cosmetics and pharmaceuticals companies. In 1993, she founded Research Dynamics to help pharmaceutical and biotech companies with complex clinical trials. Now her company helps bring new drugs to life each year. And in 2004, Ernst & Young named Ellis "New York Entrepreneur of the Year."

PERFORM ENVIRONMENTAL
FIELD WORK AROUND
THE WORLD

CAREER OPPORTUNITIES CLOSE TO CAMPUS

New York City is more than a city of entertainment, culture and dining. The metropolitan area is a thriving business hub, home to many of the world's most prominent companies. Curious about some of the opportunities that you might have after you graduate?

CONDÉ NAST PUBLICATIONS	PENGUIN PUBLISHING
HBO	PFIZER
MAJOR LEAGUE BASEBALL	TWENTY-FIRST CENTURY FOX

BIOLOGY (M.S.)					
ACCEPTANCE CRITERIA					
PROGRAM	GPA	IELTS	QUALIFYING UNDERGRADUATE DEGREES	AVAILABLE ENTRY	
IMAP	3.0	6.5	Bachelor of Science in biology or biology-related field of study.	Fall	
MAP 1	Not Available				
MAP 2					
Pre-Sessional English					
SAMPLE MAP COURSEWORK			PROGRESSION DETAILS		
<ul style="list-style-type: none">Biology courses chosen in IMAP must be at the 500, 600, and 700 level.One laboratory course required for research-based thesisTwo laboratory courses required for scholarly paper				TRANSFERABLE CREDITS	PROGRESSION REQUIREMENTS
			IMAP	9 credits	Not Applicable
			MAP 1	Not Available	
			MAP 2		
			TOTAL CREDIT HOURS REQUIRED FOR DEGREE:		
			Research-based thesis: 33		
			Scholarly paper: 36		

CREATIVE WRITING (M.F.A.)					
ACCEPTANCE CRITERIA					
PROGRAM	GPA	IELTS	QUALIFYING UNDERGRADUATE DEGREES	AVAILABLE ENTRY	
IMAP	3.0	6.5	4-year undergraduate degree, or equivalent, from an accredited university in any field.	Fall, Spring	
MAP 1	3.0	6.0			
MAP 2	2.5	5.5			
Pre-Sessional English	2.5	4.5			
SAMPLE MAP COURSEWORK			PROGRESSION DETAILS		
<ul style="list-style-type: none">Exploring the Arts: Creative Speech and Storytelling (closed course)Digital Literacies and 21st Century (closed course)				TRANSFERABLE CREDITS*	PROGRESSION REQUIREMENTS
			IMAP	3 credits	Not Applicable
			MAP 1	3 credits	3.25 GPA with no course grade lower than a B, and approval from Accelerator team.
			MAP 2	3 credits	
			TOTAL CREDIT HOURS REQUIRED FOR DEGREE:		
			40		

* Transferable credits for this degree are distinct because of specific degree requirements.

ENVIRONMENTAL STUDIES (M.S.)					
ACCEPTANCE CRITERIA					
PROGRAM	GPA	IELTS	QUALIFYING UNDERGRADUATE DEGREES	AVAILABLE ENTRY	
IMAP	3.0	6.5	B.S. in a science-related field.	Fall, Spring	
MAP 1	3.0	6.0			
MAP 2	2.5	5.5			
Pre-Sessional English	2.5	4.5			
SAMPLE MAP COURSEWORK			PROGRESSION DETAILS		
<ul style="list-style-type: none">Management Theory/Organizational Behavior (closed course)Environmental Studies Special Topics (closed course)				TRANSFERABLE CREDITS	PROGRESSION REQUIREMENTS
			IMAP	9 credits	Not Applicable
			MAP 1	6 credits	3.25 GPA with no course grade lower than a B, and approval from Accelerator team.
			MAP 2	9 credits	
			TOTAL CREDIT HOURS REQUIRED FOR DEGREE:		
			36		

Note: A closed course is a course that is taken exclusively with other students in IMAP.



WHERE CLINICAL EXPERTISE MEETS HUMAN EMPATHY

GORDON F. DERNER INSTITUTE OF ADVANCED PSYCHOLOGICAL STUDIES

The Derner Institute was founded by Dr. Gordon Derner, a visionary who championed psychoanalysis, diversity and multiculturalism in psychology. Now, the internationally recognized institute that bears his name serves as a model for more than half the clinical psychology programs in North America.

The mission of the Derner Institute is about more than analyzing what’s going on inside our heads. It’s about inspiring students to make a positive impact on the world around us. The Derner Institute addresses the current and future needs of society and fosters the critical reasoning skills and empathy that are critical for success in psychology. As a graduate student, you will receive high-level training to become both a skilled scholar and practitioner.

The Derner Institute has a long history of fostering student and faculty diversity, including racial and ethnic minority groups. The Derner Institute’s 4,000 alumni and faculty continue to change lives and make advancements in psychology research and practice.

Adelphi offers MAP for a number of graduate degrees in psychology and social work. Upon completion of their MAP semester(s), students will progress to the Derner Institute of Advanced Psychological Studies to complete the remaining credits required to earn their degree.

DEGREES OFFERED THROUGH MAP
General Psychology (M.A.)
Mental Health Counseling (M.A.)
School Psychology (M.A.)

ACCREDITED BY THE
AMERICAN
PSYCHOLOGICAL
ASSOCIATION
FOR OVER 65 YEARS

THE FIRST
UNIVERSITY-BASED
PSYCHOLOGY SCHOOL IN THE
UNITED STATES

96%
OF PSYCHOLOGY GRADUATES
SINCE 2005 ARE IN CLINICAL
PRACTICE

EXPLORING THE MIND

Clinical training is a core component of all master’s programs at Derner. Whether you’re interested in general psychology, mental health counseling or school psychology, you’ll hone your skills at on-campus clinics and in community mental health organizations.

For instance, the Postgraduate Psychotherapy Center provides you with experiential learning while helping members of the community. Thanks to a host of ongoing partnerships, master’s students also build clinical experience at many leading mental health organizations in the area.

A master’s degree from the Derner Institute will prepare you for a variety of career paths, including:

- Research in behavioral sciences
- Clinical care coordination
- Private practice (business owner)
- Substance abuse counseling
- Behavioral health administration
- Human resource management

INDUSTRY LEADERS CLOSE TO CAMPUS

CENTER FOR MEDICAL AND BRAIN SCIENCES

DOCTORS WITHOUT BORDERS

DEPARTMENT OF MENTAL
HEALTH AND HYGIENE

NYPD PSYCHOLOGICAL EVALUATION UNIT



ALUMNI SPOTLIGHT

THE PSYCHOLOGY BEHIND PIXAR’S HIT MOVIE *INSIDE OUT*

Pixar’s beloved movie *Inside Out* was one of 2015’s biggest successes. To accurately capture and show the emotions of the movie’s characters, the popular animation studio relied on adviser Dr. Paul Ekman. The Derner Institute alumnus was also a codiscoverer of micro expressions, and was even named one of the 100 most influential people in the world by *Time* magazine in 2009.

PROGRAM HIGHLIGHT

Derner’s Ph.D. program has a long tradition of training students in psychodynamics and psychotherapy integration. Many of its faculty members and alumni are nationally and internationally recognized experts in the field.

GENERAL PSYCHOLOGY (M.A.)						
ACCEPTANCE CRITERIA						
PROGRAM	GPA	IELTS	QUALIFYING UNDERGRADUATE DEGREES	AVAILABLE ENTRY		
IMAP	3.0	6.5	4-year undergraduate degree, or equivalent, from an accredited university in any field, and have taken a General Psychology course and one additional Psychology course.	Fall, Spring		
MAP 1	3.0	6.0				
MAP 2	2.5	5.5				
Pre-Sessional English	2.5	4.5				
SAMPLE MAP COURSEWORK			PROGRESSION DETAILS			
<ul style="list-style-type: none">• Social Work Practice and the Treatment of Substance Abuse (closed course)• Research Design (closed course)				TRANSFERABLE CREDITS	PROGRESSION REQUIREMENTS	TOTAL CREDIT HOURS REQUIRED FOR DEGREE: 36
			IMAP	9 credits	Not Applicable	
			MAP 1	6 credits	3.25 GPA with no course grade lower than a B, and approval from Accelerator team.	
			MAP 2	9 credits		

MENTAL HEALTH COUNSELING (M.A.)						
ACCEPTANCE CRITERIA						
PROGRAM	GPA	IELTS	QUALIFYING UNDERGRADUATE DEGREES	AVAILABLE ENTRY		
IMAP	3.0	6.5	4-year undergraduate degree, or equivalent, from an accredited university in any field, with coursework in General Psychology, Developmental Psychology, Research Methods, and Psychopathology.	Fall, Spring		
MAP 1	3.0	6.0				
MAP 2	2.5	5.5				
Pre-Sessional English	2.5	4.5				
SAMPLE MAP COURSEWORK			PROGRESSION DETAILS			
<ul style="list-style-type: none">• Social Work Practice and the Treatment of Substance Abuse (closed course)• Research Design (closed course)				TRANSFERABLE CREDITS	PROGRESSION REQUIREMENTS	TOTAL CREDIT HOURS REQUIRED FOR DEGREE: 60
			IMAP	9 credits	Not Applicable	
			MAP 1	6 credits	3.25 GPA with no course grade lower than a B, and approval from Accelerator team.	
			MAP 2	9 credits		

SCHOOL PSYCHOLOGY (M.A.)						
ACCEPTANCE CRITERIA						
PROGRAM	GPA	IELTS	QUALIFYING UNDERGRADUATE DEGREES	AVAILABLE ENTRY		
IMAP	3.0	6.5	4-year undergraduate degree, or equivalent, from an accredited university in any field, with 15 credits in Psychology that must include: General Psychology, Developmental Child or Adolescent Psychology; Abnormal Personality or Social Psychology; Tests and Measurements and Statistics.	Fall, Spring		
MAP 1	3.0	6.0				
MAP 2	2.5	5.5				
Pre-Sessional English	2.5	4.5				
SAMPLE MAP COURSEWORK			PROGRESSION DETAILS			
<ul style="list-style-type: none">• Social Work Practice and the Treatment of Substance Abuse (closed course)• Research Design (closed course)				TRANSFERABLE CREDITS	PROGRESSION REQUIREMENTS	TOTAL CREDIT HOURS REQUIRED FOR DEGREE: 72
			IMAP	9 credits	Not Applicable	
			MAP 1	6 credits	3.25 GPA with no course grade lower than a B, and approval from Accelerator team.	
			MAP 2	9 credits		

Note: A closed course is a course that is taken exclusively with other students in MAP.



SERVING THE GLOBAL AND LOCAL COMMUNITY

COLLEGE OF NURSING AND PUBLIC HEALTH

Whether you’re using technology to improve care for individual patients or preventing healthcare issues for entire communities, people come first. That’s why the College of Nursing and Public Health is based on four key principles: practice, delivery, innovation and efficiency.

Your comprehensive education prepares you to serve your community’s health. Small class sizes. Active research. Partnerships with local hospitals. The College of Nursing and Public Health provides hands-on experience in and out of the classroom. Here, you will truly benefit from the practical experience necessary to become a leader in the field of public health or healthcare informatics.

The advanced Nexus Building is a new, state-of-the-art facility that the College of Nursing and Public Health calls home. With high-tech laboratories and learning spaces, the 100,000-square-foot LEED certified building enables leading-edge instruction in the health field. The innovative center also houses essential student services, such as Adelphi’s Learning Center, Writing Center and its Center for Career Development.

Adelphi offers MAP for two graduate degrees in healthcare. Upon completion of their MAP semester(s), students will progress to the College of Nursing and Public Health to complete the remaining credits required to earn their degree.

DEGREES OFFERED THROUGH MAP
Master of Public Health (M.P.H.)
Healthcare Informatics (M.S.)

89%
OF ADELPHI STUDENTS WHO
EARNED A MASTER’S DEGREE
GAINED EMPLOYMENT WITHIN
A YEAR AFTER GRADUATION

PROJECTED JOB GROWTH IN
HEALTHCARE INFORMATICS IS
EXPECTED TO BE MUCH FASTER
THAN AVERAGE, WITH A MEDIAN
WAGE OF MORE THAN
\$90,000

SOURCE: BUREAU OF LABOR STATISTICS 2015 WAGE DATA

INCREASE IN JOB GROWTH
THROUGH 2020:

22% IN HEALTH ADMINISTRATION/
MANAGEMENT

37% IN HEALTH EDUCATION

19% IN ENVIRONMENTAL SCIENCE

COMMITMENT TO WELLNESS

Your immersive education at the College of Nursing and Public Health starts with the diverse, dedicated team of faculty. Our professors are experts in wellness, qualified caregivers, accomplished researchers and passionate advocates for healthcare issues, ready to share their knowledge and help you succeed. Graduates leave prepared to assume key roles in the healthcare industry as managers, researchers, educators, advocates and directors. They go on to provide leadership in creating and implementing programs and policy that promote the ideals of public health.

As a graduate student, you’ll have the opportunity to work with a small core group of students and share ideas and experiences. Your coursework is supplemented with valuable mentoring and clinical training to strengthen your overall experience.

CENTER FOR HEALTH INNOVATION (CHI)

Want to make a positive change while you learn? Participate in the CHI, which fosters collaboration to provide research-based improvements to healthcare, public health and healthcare systems throughout the region.



ALUMNI AND STUDENTS SPOTLIGHT

ANGEL SELVARAJ
RECENT GRADUATE
M.S., HEALTHCARE INFORMATICS

Selvaraj got her master’s degree in healthcare informatics because studies showed it was “the number one hot job.” Plus, the in-demand career combines her love of science, research, technology and interacting with people.

JAMES FERGUSON
FAMILY PHYSICIAN
M.P.H.

Dr. Ferguson has 30+ years of experience as a doctor and went back to school to learn more about public health systems, disaster preparedness, and food and water safety. As one of the first graduates of the Adelphi Master’s in Public Health program, Dr. Ferguson regularly travels to Africa, Latin America and Europe on medical mission trips.

INDUSTRY LEADERS CLOSE TO CAMPUS

Starting your career after you have your M.S. from Adelphi is easy. You’ll find many healthcare management or public health institutions in the New York City metropolitan area, including:

- AMERICAN RED CROSS
- NORTH SHORE UNIVERSITY HOSPITAL
- ST. FRANCIS HOSPITAL
- WINTHROP–UNIVERSITY HOSPITAL
- WORLD HEALTH ORGANIZATION

MASTER OF PUBLIC HEALTH (M.P.H.)					
ACCEPTANCE CRITERIA					
PROGRAM	GPA	IELTS	QUALIFYING UNDERGRADUATE DEGREES	AVAILABLE ENTRY	
IMAP	3.0	6.5	4-year undergraduate degree, or equivalent, from an accredited university in any field, and have taken a Statistics course with a grade of 3.0 or above.	Fall, Spring	
MAP 1	3.0	6.0			
MAP 2	2.5	5.5			
Pre-Sessional English	2.5	4.5			
SAMPLE MAP COURSEWORK			PROGRESSION DETAILS		
<ul style="list-style-type: none">• Management Theory/Organizational Behavior <i>(closed course)</i>• Quantitative Analyses for Nursing Research <i>(closed course)</i>				TRANSFERABLE CREDITS	PROGRESSION REQUIREMENTS
			IMAP	9 credits	Not Applicable
			MAP 1	6 credits	3.25 GPA with no course grade lower than a B, and approval from Accelerator team.
			MAP 2	9 credits	
			TOTAL CREDIT HOURS REQUIRED FOR DEGREE: <div>45</div>		

HEALTHCARE INFORMATICS (M.S.)

ACCEPTANCE CRITERIA

PROGRAM	GPA	IELTS	QUALIFYING UNDERGRADUATE DEGREES	AVAILABLE ENTRY
IMAP	3.0	6.5	4-year undergraduate degree, or equivalent, from an accredited university in any field, with coursework in Statistics and Math for Managers.	Fall, Spring
MAP 1	3.0	6.0		
MAP 2	2.5	5.5		
Pre-Sessional English	2.5	4.5		

SAMPLE MAP COURSEWORK

- Management Theory/Organizational Behavior (closed course)
- Quantitative Analyses for Nursing Research (closed course)

PROGRESSION DETAILS

	TRANSFERABLE CREDITS	PROGRESSION REQUIREMENTS
IMAP	9 credits	3.25 GPA with no course grade lower than a B, and approval from Accelerator team.
MAP 1	6 credits	
MAP 2	9 credits	

TOTAL CREDIT HOURS REQUIRED FOR DEGREE:

39

Note: A closed course is a course that is taken exclusively with other students in MAP.



YOUR NEW HOME

MODERA MINEOLA APARTMENTS

As a master's student at Adelphi University, you may live wherever you choose. One place available for postgraduate students is the Modera Mineola Apartments, a private residence facility located in Mineola, New York, only a few miles from the Adelphi campus.

You may select an apartment shared with one or two other students, and you may select a single bedroom or a double bedroom (a bedroom shared with another student). Typical accommodations include a separate dining area, one or two bathrooms, stainless steel appliances, dishwasher and microwave, moveable kitchen island, central heat and air, full-size washer and dryer, wiring for high-speed Internet, and flat-screen televisions and private balconies in apartments facing the courtyards.

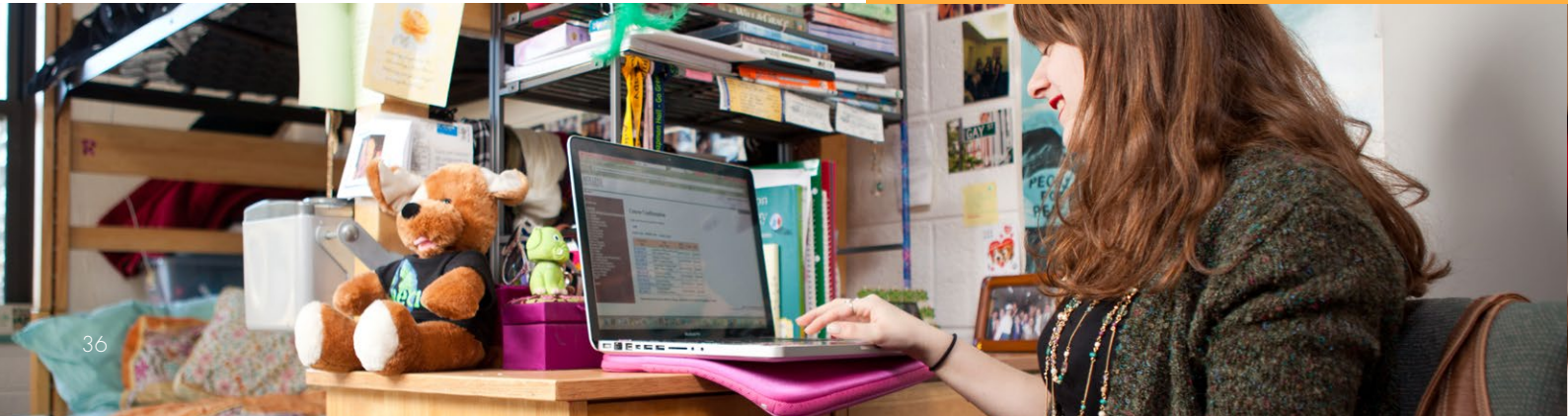
Modera Mineola Apartments feature top-of-the-line amenities, including:

- Modera Mineola Apartments units booked through Adelphi University will come furnished
- Reserved garage parking (extra fee)
- Free Wi-Fi in resident social spaces
- Sprawling clubhouse with gaming areas
- Swimming pool and 24-hour fitness studio
- Outdoor community space with lounge areas
- Bike storage
- A location just minutes to downtown Mineola and Garden City shopping and dining

Housing availability is limited and not guaranteed. To book your apartment through Adelphi University (recommended), please visit: housing.adelphi.edu/off-campus-housing/graduate-student-housing/.



It's easy to book your housing through Adelphi, but you are not required to, and may live wherever you wish.





ENTRY OPTIONS

PROGRAM DETAILS

	INTEGRATED MASTER'S ACCELERATOR 1 SEMESTER (IMAP)	MASTER'S ACCELERATOR 1 SEMESTER (MAP 1)	MASTER'S ACCELERATOR 2 SEMESTERS (MAP 2)	PRE-SESSIONAL ENGLISH
Program curriculum	Preset All integrated courses	Preset Closed and integrated courses	Preset Closed and integrated courses	Preset Closed and integrated courses
Total credits earned toward degree*	9	6	9	None
GPA admission requirement	3.0 – 3.5**	3.0	2.5	2.5
IELTS™ admission requirement	6.5, no sub-score below 6.0	6.0, no part score below 5.5	5.5, no part score below 5.0	4.5
TOEFL® admission requirement	80, no part score below 18	74, no part score below 16	68, no part score below 14	50
Other standardized tests required	None	None	None	None
Application deadline	4 weeks prior to program start	4 weeks prior to program start	4 weeks prior to program start	4 weeks prior to program start
Progression requirements	Standard progression	3.25, with no grade lower than B	3.25, with no grade lower than B	Successful completion of the program
Progression into	Master's degree	Master's degree	Master's degree	MAP 2

* Certain programs earn 3 credits toward degree, including Childhood Special Education Studies, Educational Theatre, Exercise Science and Physical Education. All other programs earn you 6 or 9 credits.

**A GPA of 3.25 is required for acceptance into the TESOL (M.A.) or Sport Management (M.S.) programs, and a GPA of 3.5 is required for all business programs for IMAP.

ESTIMATED PROGRAM DURATION

Program	Semester 1	Semester 2	Semester 3	Semester 4	Semester 5	Semester 6+
Standard Application	MASTER'S DEGREE					
IMAP – 1 semester	IMAP (9 CREDITS)	MASTER'S DEGREE (REMAINING CREDITS)				
MAP 1 – 1 semester	MAP 1 (6 CREDITS)	MASTER'S DEGREE (REMAINING CREDITS)				
MAP 2 – 2 semesters	MAP 2 (3 CREDITS)	MAP 2 (6 CREDITS)	MASTER'S DEGREE (REMAINING CREDITS)			
Pre-Sessional English	varies	MAP 2 (3 CREDITS)	MAP 2 (6 CREDITS)	MASTER'S DEGREE (REMAINING CREDITS)		

Time to completion varies based on a student's undergraduate degree, English-language ability, degree choice and course load per semester. Students may require additional semesters to complete required degree credits.

TUITION AND FEES

ESTIMATED PROGRAM COSTS

ROBERT B. WILLUMSTAD SCHOOL OF BUSINESS	CHOOSE YOUR MAP TRACK			ESTIMATE YOUR COST AFTER MAP	
	MAP 2 2 SEMESTERS	MAP 1 1 SEMESTER	IMAP + STANDARD APPLICATION 1 SEMESTER	COST PER CREDIT AFTER MAP*	TOTAL CREDITS REQUIRED <small>(INCLUDES CREDITS EARNED IN MAP)</small>
Master of Business Administration (M.B.A.) All Specializations	\$24,000	\$16,500	\$14,640	\$1,165	33–66*

RUTH S. AMMON SCHOOL OF EDUCATION	CHOOSE YOUR MAP TRACK			ESTIMATE YOUR COST AFTER MAP	
	MAP 2 2 SEMESTERS	MAP 1 1 SEMESTER	IMAP + STANDARD APPLICATION 1 SEMESTER	COST PER CREDIT AFTER MAP*	TOTAL CREDITS REQUIRED <small>(INCLUDES CREDITS EARNED IN MAP)</small>
Community Health Promotion (M.A.)	\$23,000	\$15,500	\$15,300	\$1,220	37
Childhood Special Ed Studies (M.S.)			\$15,300	\$1,220	33
Educational Technology (M.A.)			\$13,380	\$1,220	32
Educational Theatre (M.A.)			\$15,300	\$1,220	37
Exercise Science (M.S.)			\$15,300	\$1,220	36
Physical Education (M.A.)			\$15,300	\$1,220	36
Sport Management (M.S.)			\$15,300	\$1,220	36
TESOL (M.A.)	n/a	n/a	\$15,300	\$1,220	36

SCHOOL OF SOCIAL WORK	CHOOSE YOUR MAP TRACK			ESTIMATE YOUR COST AFTER MAP	
	MAP 2 2 SEMESTERS	MAP 1 1 SEMESTER	IMAP + STANDARD APPLICATION 1 SEMESTER	COST PER CREDIT AFTER MAP*	TOTAL CREDITS REQUIRED <small>(INCLUDES CREDITS EARNED IN MAP)</small>
Master of Social Work (M.S.W.)	\$23,000	\$15,500	\$13,740	\$1,090	64

* The number of credits and semesters remaining after completion of MAP varies by program and student. The average graduate student takes between 12-16 credits per semester.

COLLEGE OF ARTS AND SCIENCES	CHOOSE YOUR MAP TRACK			ESTIMATE YOUR COST AFTER MAP	
	MAP 2 2 SEMESTERS	MAP 1 1 SEMESTER	IMAP + STANDARD APPLICATION 1 SEMESTER	COST PER CREDIT AFTER MAP*	TOTAL CREDITS REQUIRED <small>(INCLUDES CREDITS EARNED IN MAP)</small>
Biology (M.S.)	\$23,000	\$15,500	\$14,640	\$1,165	33–36*
Creative Writing (M.F.A.)					40
Environmental Studies (M.S.)					36

INSTITUTE OF ADVANCED PSYCHOLOGICAL STUDIES	CHOOSE YOUR MAP TRACK			ESTIMATE YOUR COST AFTER MAP	
	MAP 2 2 SEMESTERS	MAP 1 1 SEMESTER	IMAP + STANDARD APPLICATION 1 SEMESTER	COST PER CREDIT AFTER MAP*	TOTAL CREDITS REQUIRED <small>(INCLUDES CREDITS EARNED IN MAP)</small>
General Psychology (M.A.)	\$23,000	\$15,500	\$14,640	\$1,165	36
Mental Health Counseling (M.A.)					60
School Psychology (M.A.)					72

COLLEGE OF NURSING AND PUBLIC HEALTH	CHOOSE YOUR MAP TRACK			ESTIMATE YOUR COST AFTER MAP	
	MAP 2 2 SEMESTERS	MAP 1 1 SEMESTER	IMAP + STANDARD APPLICATION 1 SEMESTER	COST PER CREDIT AFTER MAP*	TOTAL CREDITS REQUIRED <small>(INCLUDES CREDITS EARNED IN MAP)</small>
Master of Public Health (M.P.H.)	\$23,000	\$15,500	\$14,640	\$1,165	45
Healthcare Informatics (M.S.)					39

HELPFUL COST GUIDE

MAP
TUITION

+

TOTAL
CREDITS
REQUIRED

–

MAP
CREDITS
EARNED

×

COST
PER CREDIT

=

TOTAL
COST

Example:
MAP 2 in Exercise Science (M.S.)
\$23,000 MAP tuition + (36 total credits – 3 MAP credits) x \$1,220 cost per credit = \$63,260 total estimated cost

TUITION AND FEES

ESTIMATED PROGRAM COSTS, CONTINUED

IN NEED OF ADDITIONAL ENGLISH COURSES BEFORE ENROLLING IN THE MASTER'S ACCELERATOR PROGRAM?

Enroll in the Pre-Sessional English program. Classes are designed to improve students' comprehension and ability to take rigorous academic courses in the English language. Most pre-sessional students will take classes on Adelphi's Garden City campus. Pre-sessional courses for M.B.A. MAP candidates will be held in New York City, close to Adelphi International's off campus housing and about an hour from Adelphi by train (the LIRR). After completion of the Pre-Sessional English program, students will enter and pay tuition for MAP 2.

ESTIMATED COST FOR PRE-SESSIONAL ENGLISH PROGRAM (14 WEEKS)	
Tuition and Fees	\$7,500

LIVING EXPENSES	COST
Estimated Living Expenses	\$30,000
Health Insurance	\$2,000
Estimated Annual Total Living Expenses	\$32,000

Living expenses are estimated and include a monthly apartment rental cost of \$2,500 a month, which can vary depending on where a student chooses to live.

PROGRAM DATES

MASTER'S ACCELERATOR

	SPRING 2017		FALL 2017
APPLICATION DEADLINE	December 16, 2016	APPLICATION DEADLINE	July 28, 2017
MOVE-IN DATE	January 16, 2017	MOVE-IN DATE	August 21, 2017
PROGRAM START DATE	January 17, 2017	PROGRAM START DATE	August 22, 2017

Dates subject to change. Visit adelphi-international.org for the most up-to-date information.



HOW TO APPLY

COMPLETE YOUR APPLICATION.

Email your completed application to
admissions@adelphi-international.org

or mail it to:

Adelphi University
Office of Adelphi International
Post Hall, 2nd Floor, Suite 200
1 South Avenue/P.O. Box 701
Garden City, NY 11530

SUBMIT PROOF OF ENGLISH LANGUAGE ABILITY.

If your native language is not English, please submit proof of your English language ability. A full list of accepted tests can be found at **adelphi-international.org**.

RECEIVE OFFER OF ADMISSION, SUBMIT REQUIRED PAPERWORK AND PAY DEPOSIT.

GET YOUR VISA.

Once you are admitted, the international student services office at Adelphi University will send the required documents to apply for visa processing with the U.S. embassy in your country.

We have regional teams located across the world ready to assist you with your application and give you advice and guidance throughout the admissions process. Contact **admissions@adelphi-international.org** and we will direct your query to our team in your region.

SUBMIT YOUR OFFICIAL TRANSCRIPTS.

Mail them to:
Adelphi University
Office of Adelphi International
Post Hall, 2nd Floor, Suite 200
1 South Avenue/P.O. Box 701
Garden City, NY 11530

OR submit official transcripts in person upon arrival on campus.

If submitting originals upon arrival, the original transcripts must be viewed by an official Adelphi recruiter, public notary or regional office and certified with a stamp on the application. Once certified, these can be scanned and emailed to **admissions@adelphi-international.org**.

Please note: Students cannot enroll until originals have been received.

PROVIDE CERTIFICATION OF FINANCES.

After your conditional offer is received (Congratulations!), you need to submit any additional documents requested in the offer. You must also provide a Certificate of Finances and accompanying documentation from your bank showing available funds sufficient to cover the first year of your program (either two or three semesters).

Finally, you must pay a deposit, as will be outlined in your acceptance packet.

ONLY COMPLETED APPLICATIONS WILL BE PROCESSED.

PERSONAL DETAILS

Name must appear exactly as shown in applicant's passport.

Given name/First name:
Surname/Last name:
Gender:
Date of birth (DD/MM/YYYY):
City of birth:
Country of birth:
Country of citizenship:
Passport number:
Passport date of expiration (DD/MM/YYYY):

CONTACT DETAILS

Permanent non-U.S. home address:

Street (or physical address):		
City:		
State/province:		
Postal code:		
Country:		
Mobile telephone: +[]		
Home telephone: +[]		
Applicant's e-mail:		
Applicant's mailing address in the USA (if applicable):		
City:	State:	Postal code:

CHANNEL PARTNER INFORMATION (If Applicable)

Channel partner, name:
Branch (if applicable):
Recruiter name (if applicable):
Recruiter email (if applicable):

EMERGENCY CONTACT

Given name/First name:
Surname/Last name:
Gender:
Address:
City:
State/province:
Postal code:
Country:
Home telephone: +[]
E-mail:

SELECT YOUR ROUTE TO ACCELERATOR PROGRAM

<input type="checkbox"/> Integrated Master's Accelerator Program (IMAP)
<input type="checkbox"/> Master's Accelerator Program 1 (MAP 1)
<input type="checkbox"/> Master's Accelerator Program 2 (MAP 2)
<input type="checkbox"/> Pre-Sessional English

INTENDED DEGREE

Write in degree: _____

For a full list of degree offerings go to:
adelphi-international.org/map-degree-offerings

INTENDED START DATE

Indicate year and semester you wish to start.

Year: 20 _____ ☐ Fall ☐ Spring ☐ Summer

EDUCATION DETAILS

English Proficiency – Official exam results must be provided.

IELTS Score:	
Date taken or scheduled (DD/MM/YYYY):	
TOEFL iBT total score:	
Date taken or scheduled (DD/MM/YYYY):	
Have you taken another English language exam? <input type="checkbox"/> Yes <input type="checkbox"/> No If yes, please provide copies of results with application.	

Advanced Tests (if applicable)

	GRE		GMAT	
	score	%	score	%
Verbal reasoning:				
Quantitative reasoning:				
Analytical writing:				
Total score:				
Date taken or scheduled (DD/MM/YYYY):				

Post-Secondary Education History – All transcripts must be provided.

Type: <input type="checkbox"/> Post-Secondary School/University <input type="checkbox"/> Vocational <input type="checkbox"/> English Language <input type="checkbox"/> Other: _____
Name of post-secondary school attended:
City of post-secondary school:
Country of post-secondary school:
From (DD/MM/YYYY): To (DD/MM/YYYY):
(Anticipated) Date of graduation/transfer (DD/MM/YYYY):
Language of instruction:
Have you attended additional post-secondary institutions? <input type="checkbox"/> Yes (see below) <input type="checkbox"/> No

Type: <input type="checkbox"/> Post-Secondary School/University <input type="checkbox"/> Vocational <input type="checkbox"/> English Language <input type="checkbox"/> Other: _____
Name of post-secondary school attended:
City of post-secondary school:
Country of post-secondary school:
From (DD/MM/YYYY): To (DD/MM/YYYY):
(Anticipated) Date of graduation/transfer (DD/MM/YYYY):
Language of instruction:
Have you attended additional post-secondary institutions? <input type="checkbox"/> Yes <input type="checkbox"/> No If yes, please provide transcripts with application.

FORM I-20

Do you have a Form I-20 from another institution in the United States?
☐ Yes ☐ No ☐ Expired I-20 End Date (DD/MM/YYYY): _____
If “Yes” or “Expired,” please provide a copy with your application materials.

DEPENDENTS

Dependents are defined as spouses and/or unmarried children under 21.

Do you have dependents you would like to add to your I-20?

☐ Yes ☐ No

MEDICAL INSURANCE REQUIREMENT

☐ I understand Adelphi International will provide a required 12 months of medical coverage upon my arrival in the United States, at a cost of \$2,000 USD. At the end of 12 months, I will be required to extend the initial coverage. This fee changes annually and is correct at the time of printing.

SPONSORED STUDENTS

Sponsored Students are defined as any student receiving a sponsorship from their local government, organization or agency.

Check if applicable:

☐ I have guaranteed sponsorship from my local government, organization or agency. Name of Sponsor Body: _____

☐ I anticipate having sponsorship at some time during my study. Name of (Anticipated) Sponsor Body: _____

DISCIPLINARY HISTORY

Please note that if new circumstances alter your status at school or in your community after you submit this application, you are required to notify Adelphi University as soon as possible.

Have you ever been suspended, dismissed, expelled or required to withdraw from any high school or college for academic or disciplinary reasons? (An affirmative response will not automatically prevent admission, but any omission or falsification is grounds for denial or rescission of admission, or expulsion.)

☐ Yes ☐ No

Have you ever been convicted of, or pled guilty or no contest to a felony or misdemeanor charge? (An affirmative response will not automatically prevent admission, but any omission or falsification is grounds for denial or rescission of admission, or expulsion.)

☐ Yes ☐ No

DECLARATION

☐ I declare that the information I have supplied on this form is complete and correct. I understand that giving false or incomplete information may lead to the refusal of my application or cancellation of enrollment and/or loss of visa status.

☐ I have read and understand the published course information in the brochure or website, and I have sufficient information about Adelphi University and Adelphi International, including the Master’s Accelerator Program (MAP), to make an informed enrollment decision.

☐ I give Adelphi University and Adelphi International permission to obtain official records from any educational institution attended by me.

☐ I understand that after I commence my studies with Adelphi International, I will need to successfully complete the program and meet the minimum required progression standards before I can continue my studies at Adelphi University.

☐ I understand that tuition and fees may change without notice. I accept responsibility for payment of all relevant tuition and fees, and I agree to abide by the Adelphi International refund policy.

☐ I understand that living expenses in the United States may be higher than in my own country, and I confirm that I have the financial ability to meet these costs.

☐ I have read and understand the published program terms and conditions and understand that the most updated copy may be found at **adelphi-international.org/terms-and-conditions**.

APPLICANT’S SIGNATURE

Date (DD/MM/YYYY):

APPLICATION SUBMISSION

Scan and e-mail completed application to **admissions@adelphi-international.org**.





ADELPHI STANDARD APPLICATION

STANDARD APPLICATION

Graduate students must apply to the program of their choice, in accordance with the requirements set by the host school or college. Each of Adelphi's graduate programs has unique requirements and deadlines for admission. For program-specific deadlines and requirements, please visit admissions.adelphi.edu/international/apply.

GUIDELINES FOR ALL GRADUATE INTERNATIONAL APPLICANTS

- All international graduate applicants are required to submit official college or university records to the Adelphi Office of University Admissions.
- One set of records should be in school's native language and one set should be translated into English.
- Photocopies are not acceptable without an official stamp or seal from the school attended.
- All academic records should be sent directly by the previous school attended. If a student wishes to submit transcripts on behalf of the previous institution, they must be official and bear the school's stamp or seal.
- Official TOEFL/IELTS scores are required to show English-language proficiency.

ENTRY REQUIREMENTS BY COUNTRY

Country	Credential	MAP 2	MAP 1	IMAP
USA	Bachelor's degree	2.5	3.0	3.5
Angola	Licenciatura/Licenciado	55 11/20	60 13/20	70 16/20
Argentina	Licenciado/Licenciatura (4-years or more) Profesor de Enseñanza Media, Profesor de Enseñanza Secundaria Titulo en (Professional Title of) _____ (four or more years) Master/Magister, Medico Cirujano	4	6	7
Australia	Graduate Diploma, Bachelor's (honours) degree after three or four years, Bachelor's degree earned after three years is equivalent to a U.S. Bachelor's degree; students with three year degrees enroll in two year Master's programs.	4 Pass C	5 Credit B	6 Distinction A
Azerbaijan	Bakalavr (Bachelor) or Diploma of Specialist	3.5 or 65%	4 or 80%	4.5 or 90%
Bahamas	Bachelor's degree from the University of West Indies	Second Class Honours (Lower Division)	Upper Second Class	First Class Honours
Bahrain	Bachelor's degree awarded after 1984; Postgraduate Diploma in Education; Bachelor in Medicine and Surgery	C 70-79	B 80-89	A 90-100
Bangladesh	See India			
Bolivia	Licenciado/ Licenciatura; Experto en Educacion; Maestro(a) or Magister; Certificado de Egreso; Bachillerato (Social Sciences or Economics); Tecnico Superior (Higher Technician, after at least 4 years); Professional Titles (after at least 4 years of study)	51	64	77
Botswana	Bachelor's degree	C Second Class, Second Division	B Second Class, First Division	A First Class
Brazil	Licenciado/ Licenciatura earned after four or five year program; Bacharel/Bacharelado; Titulo de____ (professional title); Certificado Pos Graduacao	6/10	7/10	8/10
Brunei	Bachelor's degree	Third Class Honours	Second Class Honours Lower Division	Second Class Honours Upper Division
Bulgaria	Diplom/Diploma; Magister; Bakalavr; Professional Title earned after four-six years at Higher Education Institution	3/6	4/6	5/6
Cambodia	Diplom/Diploma; Magister; Bakalavr; Professional Title earned after four-six years at Higher Education Institution	6.5 Fairly Good C+	7.0 Good B	8.0 Very Good B+
Canada (Anglophone)	Bachelor's degree (four years); Bachelor's Degree in a professional area (i.e. architecture, law, theology, etc.); Doctor of Dental Medicine, Medicine or Veterinary Medicine	Grade averages will be assessed according to provincial variations and admission requirements for your program of study.		
Canada (Francophone)	Bacheliere (three years beyond the Diplome d'Etudes Secondaires); Baccalaureat of Administration, Applied Science, Art, Business Administration, Commerce, Computer Science, Fine Arts, Journalism, Mathematics, Nursing, Philosophy, Science (including Honours degree) (four years); Bachelier en Education (one year of postsecondary study for teacher certification)	Grade averages will be assessed according to provincial variations and admission requirements for your program of study.		
Chile	Licenciado or Licenciatura (four or more years); Titulo de_____(four or more years); Profesor de Estado or Egresado; Bachiller (four or more years); Ingeniero; Enferma or Dentista; Medico Veterinario; Arquitecto; Medico Cirujano; Egresado	4	5	6
China	Bachelor's degree earned after four year program, awarded in 1982 or later	70%	80%	90%
Colombia	Licenciado, Maestro; Titulo de_____(professional degree); Especialista or Tecnologo Especializado; Il Ciclo Teologico; Doctor en Medicina.	3/5	3.5/5	4/5
Costa Rica	Bachiller Universitario; Licenciado/Licenciatura; Ingeniero; Titulo de Conclusion de Estudios Superiores; Profesor de Educacion Secundaria or Tecnica	7/10 70/100	8/10 80/100	9/10 90/100
Cyprus	Bachelor's (Diplomasi) degree earned after four years	6.5 Credit C	7.5 Very Good B	8.5 Excellent B+
Czech and Slovak Federal Republics	Bakalar earned after four years; Diplom; Inženýr; Magistr Prav or Delani (Law or Education); Absolutorium Teologie; Absolvent; Promovaný; Doktor Mediciny or Veterinarni Mediciny (Doctor of Medicine or Veterinary Medicine)	3	2	1
Ecuador	Licenciatura/Titulo en____ (earned after four-five year program); Doctorado in Medicine, Dentistry, Pharmacy, Veterinary Medicine, Jurisprudence; Ingenier; Tecnologo; Egresado; Abogado; Profesor en Enseñaza Secundaria (Secondary Education)	24/40	30/40	35/40

ENTRY REQUIREMENTS BY COUNTRY

Country	Credential	MAP 2	MAP 1	IMAP
Egypt	Bakalorus (Bachelor's degree); Postgraduate and Professional Diplomas	50/100	65/100	85/100
El Salvador	Licenciado/Licenciatura; Titulo de _____; Doctor en Medicina/Odontologia/Cirurgia Dental; Ingeniero en _____; Bachelor of Arts/Science	6/10	7/10	9/10
Eritrea and Ethiopia	Bachelor's Degree (earned after 4- to 5-year program) Doctor of Medicine or Veterinary Medicine; Diplome de Docteur	70/100 C	80/100 B	90/100 A
Fiji	Bachelor's degree (3-year following Form 7)	60	75	90
Finland	Kandidaatti (after 4 to 5 years of study) Lisensiaatti (after 4 to 5 years of study) Professional Titles/Diplomas (after 4 to 5 years of study) ¹ Universities ² Polytech/Tech Universities	1/3 ¹ 2/5 ²	2/3 ¹ 3/5 ²	3/3 ¹ 4/5 ²
France	Diplom, Maitrise, Licence or title of Ingenieur or Architecte earned after at least a four year program. CAPES; CAPET *Holders of the Licence (earned after a three year program) degree or Diplome d'Etudes Universitaires Generales (DEUG) from France are NOT eligible for graduate admission; (3 year licence plus at least two semesters of senior-level work may be eligible for an admission)	11	12	14
Germany	Bachelor of Arts or Science from a University; Vordiplom or Zwischenprüfung plus two semesters of coursework	3.5	3	2 or lower
Ghana	Bachelor's degree (all other universities) Kwame Nkrumah University of Science & Technology (KNUST) University of Ghana	C 65% 45% Pass Class Third Class	B 75% 50% Second Class, Lower Division Second Class, Lower Division	A 85% 65% Second Class, Upper Division Second Class, Upper Division
Greece	Ptychion from a University, Higher Technical School of Educational Technologists, or a Maraslean Primary Teachers Training School; Diploma from a Military Academy or a National Academy	5.0	6.0	7.0
Guatemala	Licenciado, Ingeniero, Economista, Arquitecto, Titulo en_____(after a 5-6 year program); Titulo en Medico y Cirujano	70/100	80/100	90/100
Honduras	Licenciatura; Bachiller (at least four to five years of tertiary work) *Note: Bachiller may be used in both secondary and tertiary terms	70/100	80/100	90/100
Hong Kong	Bachelor's degree	C Second Class Lower	B Second Class Upper	A First Class
India	Bachelor's degrees earned after four years of university study, B.Engr.; B.Sc. (in Agriculture); B.Sc. (in Engineering); B.Arch.; B.Tech.; B. Law or a Master's degree in other fields. For example, the B.Sc. plus the M.Sc., the B.A. plus the M.A., and the B.Com. plus the M.Com. are considered equivalent to the U.S. bachelor's degree. Post-Graduate Diplomas in fields other than Management may not be considered acceptable for graduate admission. The most common Indian bachelor's degrees (B.Sc., B.Com., B.A.) are three year degrees. Indian Master's degrees (M.Sc., M.Com., M.A.) are typically two year degrees. Post-Graduate Diplomas are usually earned after a one year program. Transcripts showing more than 8 backlogs will not be admissible.	NOOSR 1, 2, 3 50/100 6/10 4/7 2.5/4	NOOSR 1, 2, 3 55/100 7/10 5/7 3.0/4	NOOSR 1 60/100 8/10 6/7 3.5/4
Indonesia	Sarjana (Doktoranda-Dra. or Doktorandus-Drs.); Insinyur (Ir.); Dokter Gigi (Drg.); Sarjana Baccalaureat; Dokter Hewan; Dokter Medikal; Specialist 1 (S1) or Strata I Sarjana *Please note that the Sarjana Muda or Bakaloreat (3-year degree) is NOT considered equivalent to a U.S. bachelor's degree	2/4 C	3/4 B	4/4 A
Iran	Licence/Licentiate (Bachelor's Degree), Karshenasi	12/20	14/20	16/20
Iraq	Bachelor's degree, Doctor of Medicine (M.B.B.S) Higher Diploma (in field other than Education/Library Science/Secretarial Studies)	50/100	60/100	70/100
Israel	Bachelor's Degree or Baccalauria; Licence; Postgraduate Diploma; Doctor of Dental Medicine/Medicine/Veterinary Medicine ¹ University ² Non-University	50/C ¹ 65/C ²	75	85
Italy	Graduates of an Istituto Superiore di Educazione Fisica (ISEF); Holders of Laurea; Diploma di Licenza; Licentia; Baccalaureatus; Doctoratus/Dottore; Postgraduate Diploma	22/30	24/30	27/30
Jamaica	Bachelor's Degree; Diploma in Tropical Agriculture; Postgraduate Diploma in Library Studies; Diploma in Food Technology; Diploma in Management Studies; Diploma in Public Administration	Second Class Honours, Lower Division	Second Class Honours, Upper Division	First Class Honours

ENTRY REQUIREMENTS BY COUNTRY

Country	Credential	MAP 2	MAP 1	IMAP
Japan	Gakushi (Bachelor's) degree earned after a four year program; Gakushi Igakushi (Medicine); Shigakushi Igakushi (Dentistry)	60/C	70/B	80/A
Jordan	Bachelor's degree Postgraduate diploma in Education	60/Fair	70/Good	80/Excellent
Kazakhstan	See Russia/CIS			
Kenya	Bachelor's degree	D Pass 45%	Second Class Honours Lower C Satisfactory 55%	Second Class Honours Upper B Good 69%
Korea, Republic of (South Korea)	Bachelor's degree earned after a four-year program; BS in Medicine or Dentistry	75	80	85
Kuwait	Bachelor's degree; Postgraduate and professional diplomas/certificates	75%	80%	90%
Liberia	Bachelor's degree or Doctor of Medicine	75/C	80/B	90/A
Macau	See China			
Malaysia	Bachelor's degree	C+	B	A
Mauritius	Bachelor's degree (3 or 4-years)	55 Lower Second C	60 Upper Second B	70 First A
Mexico	Licenciado/Licenciatura earned after a four year program; Titulo/professional title or degree earned after four or more years program *Bachillerato from Mexico is NOT equivalent to a U.S. bachelor's degree	7/70/C	8/80/B	9/90/A
Mongolia	Bachelor's degree	75 C	80 B	90 A
Netherlands	Doctoraal/Doctorandus, Ingenieur(ir) from a University Meesterin de rechten(mr)-Law Post-Graduate Diploma from HBO (Hoger Beroepsonderwijs) covering at least one year of study	6/10	7/10	8/10
Nicaragua	Licenciado; Ingeniero; Doctor en Medicina; Arquitecto; Cirujano Dentista; Administrator Funcional; Diploma de Curso de Postgrado; Doctor en Derecho; Profesor de Educacion Media	70/100	80/100	90/100
Nigeria	Bachelor's degree	45 Third Class 2.5	50 Second Class Lower Division 3.0	65 Second Class Upper Division 3.5
Norway	Candidatus Magsterii (Cand. Mag.)/Juris (Cand. Juris) (5-7 years, some equiv. to U.S. Master's Degree), Sivilingenior, Handelsokonom (earned after four-year program), Sivilokonom, Adjunkt, Diplomokonom	2.9	2.5 or lower	2.0 or lower
Oman	Bachelor's degree	2/C	3/B	4/A
Pakistan	Bachelor's degree (4-year only). 2- and 3-year Bachelor's plus 2-years Masters degree acceptable.	50 Pass	60 Second Class	70 First Class
Panama	Licenciado, Titulo Profesional, Doctor en Medicina or Cirugia Dental, Profesor en Educacion or Otras Escuelas *Bachillerato from Panama is NOT equivalent to a U.S. bachelor's degree	71/100	81/100	91/100
Paraguay	Licenciado/Licenciatura (earned after 4 or more years of study), Notario, Ingeniero, Arquitecto; Profesor de Enseñaza Secundaria; professional titles (after 4 or more years of postsecondary education)	2 Regular	4 Bueno	4 Distinguido
Peru	Licenciado, Bachiller en Educacion, Profesor(a) de Education (earned after 5 years), Cirujano-Dentista; Medico-Cirujano, Diploma de Teologia, Titulo de _____ *Bachiller Estudios Generales is NOT equivalent to a U.S. Bachelor's degree	11/20	12/20	15/20
Philippines	Bachelor's degree if earned after 1997 from a public, state institution after 4-5 years of study. Post-Graduate Diploma consisting of graduate work; Doctor of Veterinary Medicine/ Dental Medicine/Medicine/Optomerty (first professional degrees).	80%/C+	85%/B	2 or lower/A
Poland	Dyplom Magister; Dyplom Magister Inzynier; Lekarz (Physician or Dentist); Magister Farmacji pharmacist); Licencja from Academy of Catholic Theology; Magister Prawa (lawyer)	3/6	4/6	5/6
Portugal	Licenciado/Licenciatura (after four or more years)	10/20	12/20	15/20

ENTRY REQUIREMENTS BY COUNTRY

Country	Credential	MAP 2	MAP 1	IMAP
Qatar	Bachelor's degree	C Good	B Very Good	A Excellent
Romania	Diploma de Licenta/Licentiat; Diploma de Inginer; Diploma de Architect; Diploma de Doctor-Medic; Professional Titles earned after four-five year program	5/10	7/10	8/10
Russia/CIS	Diplom/Diploma, Inzenyr, Magister, Bakalavr from an institute, university, academy or conservatory	3	4	5
Saudi Arabia	Bachelor's degree; higher diploma (Intermediate or Secondary School Principals); Bachelor of Medicine or Surgery	65/100	75/100	85/100
Singapore	Bachelor's degree	D Pass Second Class Honours	C Good Second Class Upper	AD Excellent First Class Honours
Scotland	Bachelor's degree, must be four years in length; Master of arts and postgraduate diplomas are equivalent to U.S. bachelor's degrees	2.5 Third Class	Second Class Lower B	3.0 Second Class Upper
Spain	Licenciado/Licenciatura, Bachiller, Ingeniero earned after four- or five-year program; Maestro earned after Titulo de Tecnico Superior; Arquitecto; Grado de Licenciado	6/10	7/10	8/10
Sri Lanka	Bachelor's degree earned after four year program Diploma in Education; Postgraduate diploma (in addition to other three-year degree); Bachelor of Medicine or Surgery	C 44/100	B 55/100	A 70/100
Sweden	Kandidat; Civingenjörsexamen; Ekonomexamen; Magister or Masterexamen; Filosofie Doktorexamen; Bergsingenjör; Arkitekt; Högskoleexamen Pa Musikerlinjen; Högskoleexamen	Godkänd	Väl Godkänd	Väl Godkänd
Switzerland	Licence/Lizentiat (earned after 3- to 4-year program); Diplome d'Architecte, Ingenieur-Agronom/ Forstingenieur (ETH); Diplome d'Ingenieur/Diplome Ingenieur (ETH), Fachingenieur (NTB); Doctorat en Droit (Lausanne); Zeichenlehrer or Maitre de Dessin; Doctor Medicinae; Upper Secondary Teacher Credentials	5/10 3/6 5/10	3/4 5/6 7/10	3/4 5/6 7/10
Syria	Bachelor's degree (Licentiate) Postgraduate and professional diplomas and certificates earned after at least 4-years of tertiary study	60/100	70/100	80/100
Taiwan	Bachelor's degree earned after four-year program, including Medicine and Dentistry	65/100	75/100	80/100
Turkey	Bachelor's degree; Lisans Diplomatı (Licentiate Diploma); Teacher's Certificate; Lisans Diplomatı plus Engineer Title; Diploma in Vet Science, Dentistry, Pharmacy or Medical Doctor	60/100 6/10	70/100 7/10	80/100 9/10
UAE	Bachelor's degrees, including Bachelor of Medicine and Bachelor of Surgery Licentiate (Law degree) awarded after 1981; Postgraduate diploma	75/100 2.5 (C+)	80/100 3.0 (B)	90/100 3.6 (B+)
Uganda	Bachelor's degree, including Bachelor of Medicine or Bachelor of Surgery; Postgraduate and professional diploma or certificate	Class 2 Honors Lower	Class 2 Honors Upper	Class 1 Top Honors
Ukraine	Attestat Certificate of Complete General Secondary Education or Matriculation Certificate	3.5/6	4/6	5/6
United Kingdom	Bachelor's degree; Diploma in Technology or Technological Engineering or Arts and Design	Second Class (lower division) 50	Second Class (upper division) 60	First Class 70
Venezuela	Licenciado; Ingeniero; Tecnólogo; Profesor; Abogado; Agronomo; Arquitecto, Trabajador Social earned after four- or five-year program	12/20	14/20	16/20
Vietnam	Licence/Cu-Nhan (four years); Diploma of Graduation in Pedagogy; Doctorate in Law; State Diploma or Degree in Architecture; Diploma of State in Dental Surgery/Pharmacy/ Doctor in Medicine; Bachelor of Arts	6	7	8
Yugoslavia	Diploma Inzenjer, Arhtikt, Visoka Skola, Filozofskog, or Prirodno-Matematickog Fakulteta, Diplomirani Ekonomist, Second University Degree, Drugi Strucni Naziv, Inzenir Kemijske Tecologijije, Doktor (Medicine, Stomatolog, Veterinary Medicine), Specijalist	6/10	7/10	8/10

MASTER’S ACCELERATOR PROGRAM

TERMS AND CONDITIONS

1. **PROSPECTIVE AND CURRENT STUDENTS OF THE ADELPHI INTERNATIONAL MASTER’S ACCELERATOR PROGRAM AT ADELPHI UNIVERSITY (“MAP”)** should read these terms and conditions carefully prior to submitting an application. If you are admitted to the MAP you will be bound by these terms for the duration of your Program. In addition to these terms and conditions, as a student at Adelphi University (“AU”), you will be bound by the rules and regulations governing AU, as those may be amended from time to time. These rules and regulations may be found at: operations.adelphi.edu/policies.
2. **AU AND ADELPHI INTERNATIONAL** reserve the right to amend these terms and conditions from time to time. By signing these terms and conditions you acknowledge and agree to comply at all times with the then-current terms and conditions, found at: adelphi-international.org/terms-and-conditions.
3. **APPLICATION:** Students may apply to the MAP for a 1-term program, 2-term program, or Integrated MAP, or to graduate Pre-Sessional English (collectively the “Programs”). If you apply to any of these Programs, be sure to use the application that is specific to the Program you select. Each application contains terms and conditions governing the specific Program and you acknowledge that by submitting an application you agree to the terms and conditions of your respective Program. Links to applications and terms and conditions can be found here: adelphi.edu/international.
4. **ADMISSION:** If you are admitted to the Adelphi International MAP at Adelphi International you will receive a written offer letter with details and instructions on accepting the offer, paying the Program deposit and arriving on campus.
5. **TUITION AND FEES PAYMENT:** Following payment of the deposit, you must pay the remaining outstanding balance shown on the MAP invoice by the following posted payment deadline of the semester in which you will enroll:
- Spring 2017: January 2, 2017
Summer 2017: May 10, 2017
Fall 2017: August 7, 2017
- You are responsible for paying the full invoice amount, including any banking or processing fees. Adelphi International has the right to amend prices due to University actions, governmental actions or other events beyond its control.
6. **FAILURE TO PAY:** Failure to pay by your applicable posted payment deadline may lead to penalties, including late fees and a hold on your account that will prevent you from enrolling in classes. Pursuant to section 19 of these terms and conditions, we will be required to report you to the U.S. Department of Homeland Security (“DHS”) if you are unable to enroll due to nonpayment of tuition and fees and you may lose immigration status.
7. **CANCELLATION, CHANGE, CURTAILMENT OR WITHDRAWAL:** You will only be eligible for a deposit refund if you submit documentation of visa denial with written notification to Adelphi International prior to the move-in date. If you cancel your enrollment prior to your Program move-in date (see table below for the move-in date applicable to you) you may request a full refund of your deposit, tuition and fees, less

any non-refundable fees. After the start of the Program, you may be eligible for the following partial Program refunds:

SPRING 2017		
Last day 100% refund (less all fees)	January 22, 2017	
Last day 90% refund	January 29, 2017	
Last day 50% refund	February 12, 2017	
Last day 25% refund	February 19, 2017	
Begin 0% refund	February 20, 2017	
FALL 2017		
Last day 100% refund (less all fees)	August 27, 2017	
Last day 90% refund	September 3, 2017	
Last day 50% refund	September 17, 2017	
Last day 25% refund	September 24, 2017	
Begin 0% refund	September 25, 2017	

Cancellations made prior to your Program start date but after your arrival to the U.S. on an AU-issued Form I-20 will be governed under the standard AU student immigration policies. Please refer to the table below for the Program start date applicable to you.

8. **REFUNDS:** Adelphi International will only make refunds in U.S. dollars, minus bank transfer and processing fees, and will make such refunds in the manner in which Adelphi International was originally paid and to the account of the party or parties who made such payment(s). All refunds will be made to eligible parties within 45 days of a written request.
9. **AIRPORT TRANSFERS:** Requests for airport transfer service should be made at least 2 weeks in advance of arrival by visiting adelphi-international.org/welcome. Airport transfers are available for your initial arrival on campus for flights arriving at John F. Kennedy International Airport (JFK) and LaGuardia Airport (LGA). Adelphi International cannot guarantee a reservation for a request made less than 2 weeks in advance. If your flight is canceled or delayed, you must call the emergency telephone number published in the Next Steps Brochure to inform Adelphi International staff of the new arrival date or time. Airport transfer fees are nonrefundable.
10. **HOUSING ACCOMMODATION AND MEAL PLAN:** Program housing is not available for MAP students. MAP students needing accommodations may choose to live off-campus at Modera Mineola Apartments, a private housing facility, or other locations. Students who are interested in this housing option should contact: **housing.adelphi.edu/off-campus-housing/graduate-student-housing/** for availability and costs. MAP students interested in purchasing a meal plan on campus should contact Adelphi University directly.
11. **HEALTH INSURANCE:** All international students studying at AU are required to be covered by health insurance that meets the U.S. Government, New York State and AU requirements. Not all services are covered, and the student is responsible for any outstanding balances for non-covered services.

a. At the time of application, you are required to purchase coverage from an Adelphi International-designated health plan as a condition of enrollment.

b. You must provide a complete health history and physical examination form. Included with this documentation must be proof of immunization to Measles (Rubeola), Mumps and German Measles (Rubella) [MMR]. All students must also show proof of a negative tuberculin test. Mandatory Immunization Forms may be obtained through the Adelphi Health Services Center office [health.adelphi.edu/forms]. Students must have submitted documentation to register for classes.

c. The cost of health insurance is non-refundable.

12. **ACADEMIC RESOURCES:** All books and learning materials must be purchased upon arrival at AU through the AU bookstore or other recommended sources.
13. **VACATION, HOLIDAYS AND SCHOOL CLOSURES:** MAP students must adhere to the AU Academic Calendar for holidays and vacations. Classes will not be held on designated school vacations and may be canceled on public holidays. Adelphi International will not make reimbursements for classes not offered due to holidays, vacations or school closures due to emergencies.
14. **ABSENCES:** Failure to meet attendance requirements may lead to penalties, including loss of immigration status. You will not receive a refund if you lose immigration status due to class absences.
15. **ACADEMIC PERFORMANCE:** Students are accepted to the MAP with the strict understanding that progression through the MAP and successful completion of any Program will require satisfactory attendance, successful attainment of specified progression criteria and adherence to the AU Academic Integrity code, which can be found at: academics.adelphi.edu/academic-integrity. To continue in the MAP, you must also be in compliance with the Adelphi International MAP academic standards and progression requirements, which can be found at Adelphi-International.org/MAP. You will not be allowed to proceed if you do not meet the criteria for successful completion of your Program. If you are unable to proceed, you may be offered advice on suitable alternatives, including repeating courses or dismissal from AU. These alternative options may involve additional time and costs, including tuition and other fees which may require presenting additional proof of finances to AU’s Designated School Official’s office.
16. **STUDENT CONDUCT:** AU’s Code of Conduct provides a framework of standard acceptable behavior for students. You are responsible for complying with AU’s policies, rules and regulations, which can be found at: adelphi.edu/policies/code-of-conduct.
17. **ACADEMIC OR CONDUCT RULE AND POLICY VIOLATIONS:** You may be suspended or expelled if you violate any of AU’s or Adelphi International’s policies, rules or regulations, which may result in the revocation of your immigration status. No refund will be given in cases of suspension or expulsion.
18. **GRIEVANCE PROCEDURES, APPEALS OR COMPLAINTS:** You must follow the policy and procedures for filing complaints, grievances and appeals in a constructive and timely manner by visiting: operations.adelphi.edu/policies.
19. **F-1 STATUS:** In order to maintain proper F-1 status, you must comply with all applicable Federal regulations related to study in the U.S., including pursuit of a full course of study. You will be in jeopardy of losing your immigration status if you fail to maintain the necessary academic standing. We will be required to report you to the SEVIS database of the DHS for any violation of your F-1 status. Your personally identifiable information, including course enrollment details and changes, and circumstances of any suspected breach by you of AU’s or Adelphi International’s policies may be shared with the DHS, AU and accrediting agencies, designated authorities, your

parents and Adelphi International staff and agents. If you intend to seek non-F-1 or L-2 visa status at any point during your anticipated tenure at Adelphi, you must disclose such intent at the time of application. You will be dismissed from the Program if it is revealed that you intend to change your immigration status or if your status actually changes. No refunds will be given if you must leave the Program due to change or loss of F-1 or L-2 status.

20. **PHOTOGRAPHY, FILMING AND SOUND RECORDING:** The Adelphi International MAP at Adelphi University or its representatives, affiliates, successors and related companies may arrange to photograph or shoot video footage of students for purposes of advertising, public relations and/or promotion in any medium throughout the world, including on social media sites and on the internet. If you do not wish to participate you must advise us in writing and state at the time of the photography or video shooting the wish not to participate. By accepting these terms and conditions you are indicating your consent to use these photographs or video footage without further consent or notifications unless you follow the above opt-out requirements.
21. **IN ACCORDANCE WITH THE FAMILY EDUCATIONAL RIGHTS AND PRIVACY ACT OF 1974 (FERPA)**, each student will be given the option to sign a waiver form upon arrival permitting AU and the MAP at Adelphi University to disclose personally identifiable information, including educational records, financial information and attendance records to the student’s parent(s), guardian(s), sponsor(s), sponsorship bodies and recruiter(s) with information pertaining to their application, academic progress, results and attendance. These permissions will remain in effect during the student’s tenure at the MAP and AU unless the student submits a written revocation of this permission to AU’s Office of the Registrar.
22. **FORCE MAJEURE:** AU and Adelphi International will not be liable in cases where AU and/or Adelphi International is unable to fulfill any services because of fire, natural disaster, national emergency, act of government, acts of war or terrorism, failure of suppliers or subcontractors, labor disputes or any other reasons which are beyond AU’s or Adelphi International’s control.
23. **LIABILITY:** The liability of the Adelphi International MAP at Adelphi University, its Operator and its group companies, their directors, officers, employees, affiliates, agents and partners with respect to losses arising from negligence (except where such liability cannot be excluded as a matter of law), breach of contract or otherwise will be limited in all circumstances to the full amount paid to AU, Adelphi International or the relevant group company by the relevant student for the particular Program. Such companies and persons will in no circumstances have any liability for indirect or consequential losses or damages. Any dispute, claim or other matter arising will be subject to the jurisdiction and laws of New York without regard to the choice of law rules. Any legal suit, action or proceeding seeking to enforce any provision of, or based on any right or issues arising out of or related to these terms and conditions, shall be brought exclusively in New York Supreme Court, Nassau County. By signing these terms and conditions, the student consents to and accepts the jurisdictions of such courts for the purpose of any such action or proceeding and agrees to waive any objection to venue being laid therein.

24. **MOVE-IN AND PROGRAM START DATE:**

	SPRING	FALL
Move-In Date	January 16, 2017	August 21, 2017
Program Start Date	January 17, 2017	August 22, 2017





ADELPHI INTERNATIONAL

ADELPHI UNIVERSITY
OFFICE OF ADELPHI INTERNATIONAL
POST HALL, 2ND FLOOR, SUITE 200
1 SOUTH AVENUE/ P.O. BOX 701
GARDEN CITY, NY 11530

P: 516.283.5712

ADELPHI.EDU/INTERNATIONAL



admissions@adelphi-international.org



AdelphiU



AdelphiU



AdelphiU